

REG'D PL

PIN 36086 1469 PIN 36086

107 108

IB (1338)

IB (1407)

(13R-17850 & MEAS)

N 89°15'40" E

REFERENCE

20.94
(13R-17850 & MEAS)

29.41
(13R-17850 & MEAS)

PIN

36086

1684

PART 7

BL

PART 8

PLAN

PART 4

PIN 36086 1664

PLAN 13R-18285

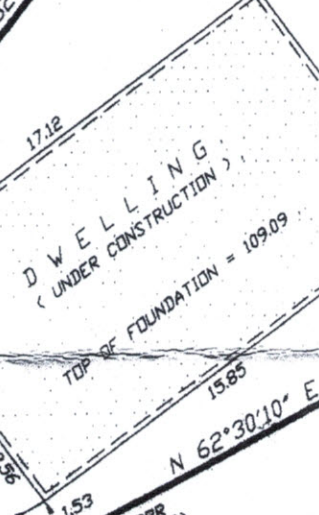
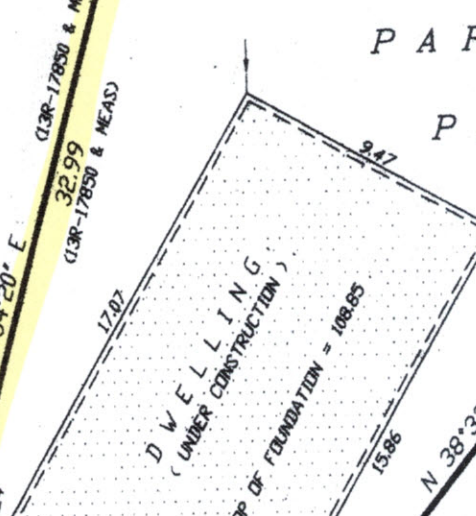
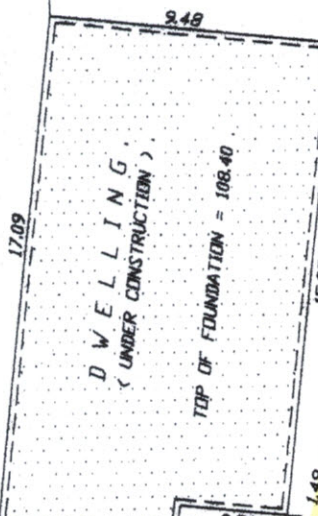
31.00

1.50

8.4

37.21

11.5



N 83°06'52" W
C = 6.11
A = 6.13
R = 23.00
(13R-17850 & MEAS)

6.18 (MEAS)
N 89°15'40" E
6.10 (13R-17850)

N 63°08'20" V
C = 9.57
A = 9.64
R = 23.00
(13R-17850 & MEAS)

N 39°08'27" V
C = 9.57
A = 9.64
R = 23.00
(13R-17850 & MEAS)

ELLESMERE AVENUE
(ACCORDING TO PLAN 36086)

SEE SURVEYOR'S RE FROM THIS OFFICE